

MADAME BUTTERFLY

An Opera In 3 Acts

Giacomo Puccini

Libretto by Luigi Illica and Giuseppe Giacosa

Based on a short story by John Luther Long

Director: John Copley

Set Designer: Michael Yeargan

Lighting Designer: Duane Schuler

Costume Designer: Michael Yeargan



Chorus Breakdown

12 Sopranos
8 Contralto
10 First Tenor

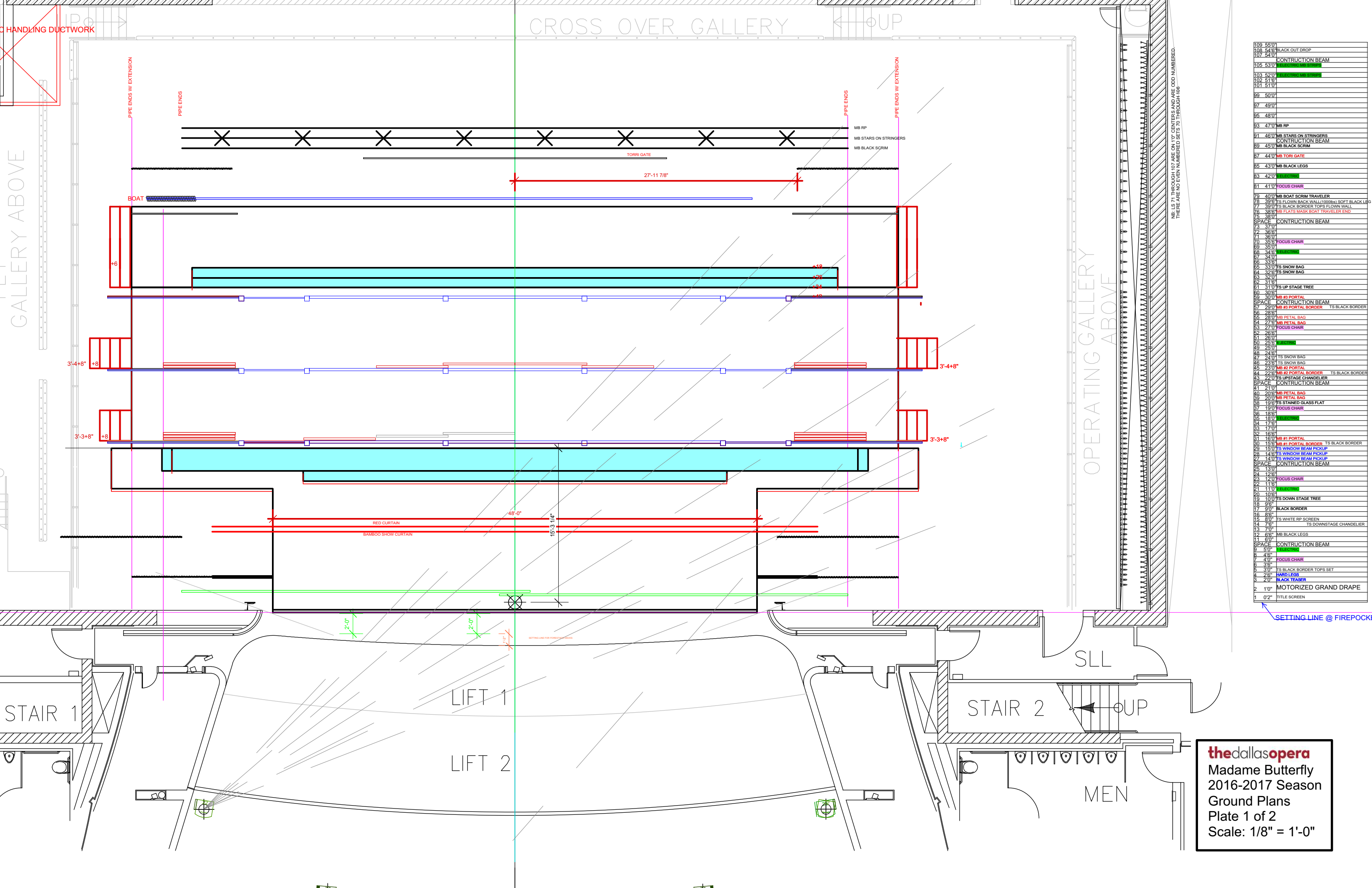
Technical and Production Personnel

4 Stage Managers
9 Stage Crew Including Flys
4 Electric Crew
3 Follow Spots
11 Wardrobe
5 Wigs and Makeup

Special Effects

None

Transport
2 40'-0" Containers



| | | |
|-----|-------|--|
| 109 | 55'0" | BLACK OUT DROP |
| 108 | 54'6" | BLACK OUT DROP |
| 107 | 54'0" | CONSTRUCTION BEAM |
| 105 | 53'0" | ELECTRIC MB STRIPS |
| 103 | 52'0" | ELECTRIC MB STRIPS |
| 102 | 51'6" | ELECTRIC MB STRIPS |
| 101 | 51'0" | ELECTRIC MB STRIPS |
| 99 | 50'0" | ELECTRIC MB STRIPS |
| 97 | 49'0" | ELECTRIC MB STRIPS |
| 95 | 48'0" | ELECTRIC MB STRIPS |
| 93 | 47'0" | MB RP |
| 91 | 46'0" | MB STARS ON STRINGERS |
| 89 | 45'0" | CONSTRUCTION BEAM |
| 87 | 44'0" | MB TORI GATE |
| 85 | 43'0" | MB BLACK LEGS |
| 83 | 42'0" | MB BLACK LEGS |
| 81 | 41'0" | FOCUS CHAIR |
| 79 | 40'0" | MB BOAT SCRIM TRAVELER |
| 78 | 39'6" | TS FLOWN BACK WALL (1000b) SOFT BLACK LEGS |
| 77 | 39'0" | TS BLACK BORDER TOPS FLOWN WALL |
| 76 | 38'6" | MB PLATS MASK BOAT TRAVELER END |
| 75 | 38'0" | MB PLATS MASK BOAT TRAVELER END |
| 74 | 37'6" | CONSTRUCTION BEAM |
| 73 | 37'0" | CONSTRUCTION BEAM |
| 72 | 36'6" | CONSTRUCTION BEAM |
| 71 | 36'0" | CONSTRUCTION BEAM |
| 70 | 35'6" | FOCUS CHAIR |
| 69 | 35'0" | FOCUS CHAIR |
| 68 | 34'6" | ELECTRIC MB STRIPS |
| 67 | 34'0" | ELECTRIC MB STRIPS |
| 66 | 33'6" | ELECTRIC MB STRIPS |
| 65 | 33'0" | TS SNOW BAG |
| 64 | 32'6" | TS SNOW BAG |
| 63 | 32'0" | TS SNOW BAG |
| 62 | 31'6" | TS SNOW BAG |
| 61 | 31'0" | TS UP STAGE TREE |
| 60 | 30'6" | TS UP STAGE TREE |
| 59 | 30'0" | MB #3 PORTAL |
| 58 | 29'6" | CONSTRUCTION BEAM |
| 57 | 29'0" | MB #3 PORTAL BORDER |
| 56 | 28'6" | TS BLACK BORDER |
| 55 | 28'0" | MB PENTAL BAG |
| 54 | 27'6" | MB PENTAL BAG |
| 53 | 27'0" | FOCUS CHAIR |
| 52 | 26'6" | FOCUS CHAIR |
| 51 | 26'0" | FOCUS CHAIR |
| 50 | 25'6" | ELECTRIC MB STRIPS |
| 49 | 25'0" | ELECTRIC MB STRIPS |
| 48 | 24'6" | ELECTRIC MB STRIPS |
| 47 | 24'0" | TS SNOW BAG |
| 46 | 23'6" | TS SNOW BAG |
| 45 | 23'0" | MB #2 PORTAL |
| 44 | 22'6" | MB #2 PORTAL BORDER |
| 43 | 22'0" | TS UPSTAGE CHANDELIER |
| 42 | 21'6" | CONSTRUCTION BEAM |
| 41 | 21'0" | CONSTRUCTION BEAM |
| 40 | 20'6" | MB PENTAL BAG |
| 39 | 20'0" | MB PENTAL BAG |
| 38 | 19'6" | TS STAINED GLASS FLAT |
| 37 | 19'0" | FOCUS CHAIR |
| 36 | 18'6" | FOCUS CHAIR |
| 35 | 18'0" | ELECTRIC MB STRIPS |
| 34 | 17'6" | ELECTRIC MB STRIPS |
| 33 | 17'0" | ELECTRIC MB STRIPS |
| 32 | 16'6" | ELECTRIC MB STRIPS |
| 31 | 16'0" | MB #1 PORTAL |
| 30 | 15'6" | MB #1 PORTAL BORDER |
| 29 | 15'0" | TS WINDOW BEAM PICKUP |
| 28 | 14'6" | TS WINDOW BEAM PICKUP |
| 27 | 14'0" | TS WINDOW BEAM PICKUP |
| 26 | 13'6" | CONSTRUCTION BEAM |
| 25 | 13'0" | CONSTRUCTION BEAM |
| 24 | 12'6" | CONSTRUCTION BEAM |
| 23 | 12'0" | FOCUS CHAIR |
| 22 | 11'6" | FOCUS CHAIR |
| 21 | 11'0" | ELECTRIC MB STRIPS |
| 20 | 10'6" | ELECTRIC MB STRIPS |
| 19 | 10'0" | TS DOWN STAGE TREE |
| 18 | 9'6" | TS DOWN STAGE TREE |
| 17 | 9'0" | BLACK BORDER |
| 16 | 8'6" | BLACK BORDER |
| 15 | 8'0" | TS WHITE RP SCREEN |
| 14 | 7'6" | TS DOWNSTAGE CHANDELIER |
| 13 | 7'0" | TS DOWNSTAGE CHANDELIER |
| 12 | 6'6" | MB BLACK LEGS |
| 11 | 6'0" | MB BLACK LEGS |
| 10 | 5'6" | CONSTRUCTION BEAM |
| 9 | 5'0" | ELECTRIC MB STRIPS |
| 8 | 4'6" | ELECTRIC MB STRIPS |
| 7 | 4'0" | FOCUS CHAIR |
| 6 | 3'6" | FOCUS CHAIR |
| 5 | 3'0" | TS BLACK BORDER TOPS SET |
| 4 | 2'6" | HARD LEGS |
| 3 | 2'0" | BLACK TEASER |
| 2 | 1'0" | MOTORIZED GRAND DRAPE |
| 1 | 0'2" | TITLE SCREEN |

thedallasopera
 Madame Butterfly
 2016-2017 Season
 Ground Plans
 Plate 1 of 2
 Scale: 1/8" = 1'-0"

